



# CLUSTER ACCESSORIES

## MILFOS LUXATOR QUICK RELEASE CLIP

The Milfos Luxator quick release clip was developed to provide a reusable breakaway point on the rope between the ACR ram and the cluster; this prevents damage to equipment if a cluster gets caught. It is made of high tech plastics and when it breaks away can be reassembled by inserting the ball end in the cavity and then locking it back in place.

It is attached to the cluster by a heavy duty key ring.



REF	DESCRIPTION	CODE
	Milfos key ring	CCE1180
1	ACR Luxator quick release clip	ACM1500



## MILFOS ACR HARNESS

The Milfos ACR harness was designed so that clusters of any brand or type which have ACRs fitted will hang correctly on the end on the ACR rope. It is fitted over the milk nipples and the liners hold it in place.

It can be used when retrofitting ACRs to save mounting an ACR attachment point on the cluster. It incorporates a Milfos Luxator quick release clip so also acts as a breakaway if a cluster is caught.



### REPLACEMENT PARTS FOR HARNESS

REF	DESCRIPTION	CODE
2	ACR Luxator clip socket	ACM1100
3	ACR Luxator clip ball end	ACM1200
4	Screw button 1/4*1/2 S/S	QSB0641
5	Washer flat 1/4 12.5mm O/D 304 S/S	QWF0641
6	ACR claw piece harness	ACM1520



## SHEEP & GOAT CLUSTERS - iTP205

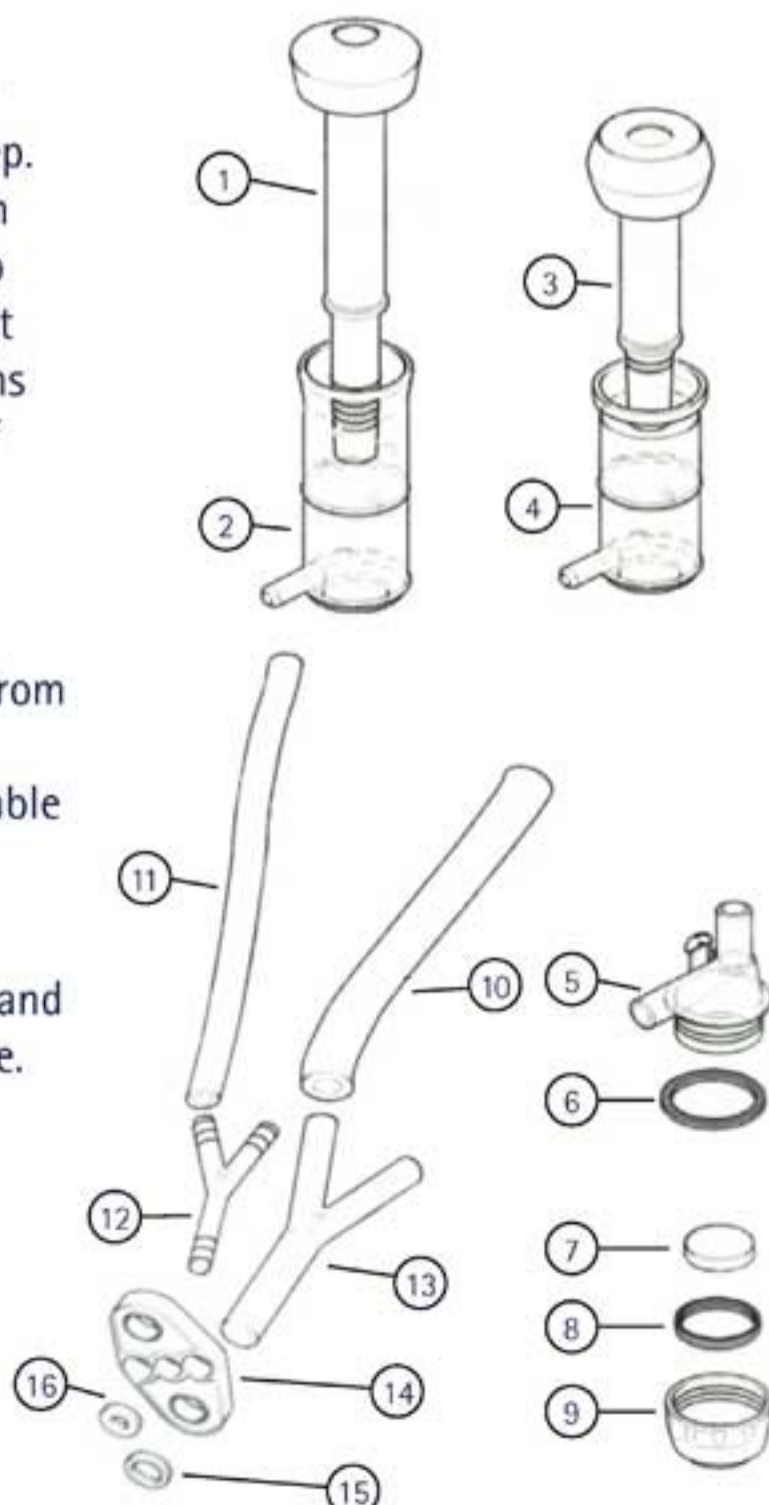
The Goat & Sheep cluster is a lightweight cluster specifically developed to enable easy cluster placement onto either a goat or sheep. It incorporates a unique shut off valve which automatically controls the vacuum supply to each liner during milking; as soon as the teat enters the liner the valve automatically opens then when the teat is removed at the end of milking rapid air intake creates a vacuum in the valve which automatically closed it.

During washing there is a small lever which must be pushed down to prevent the valve from closing due to water turbulence. Milfos also recommend a snap clamp is also used to enable a complete vacuum shutoff during machine start up.

It is made of tough impact resistant plastics and has a silicone liner which is easily replaceable.

### FEATURES

- Easy to inspect for cleaning
- Valves open/close automatically
- Shut off in a kick off event
- Lightweight - 590 grams a complete set



REF	DESCRIPTION	CODE
	Goat cup S/S No 7 light weight	CTC0017
1	Goat liner	CCG0209
2	Goat teat cup plastic	CCG0213
3	Sheep liner	CCG0210
4	Sheep teat cup plastic	CCG0215
5	Classic iTP205 upper sight body	CCG0261
6	Classic iTP205 central gasket	CCG0262
7	Classic original & iTP205 S/S valve	CCG0276
8	Classic itp205 bottom seal ring	CCG0263
9	Classic itp205 bottom knurled body	CCG0264
10	Classic claw silicon milk tube	CCG0260
11	Classic claw pvc air tube	CCG0230
12	Classic Y splitter air piece	CCG0218
13	Classic Y splitter milk piece	CCG0220
14	Classic claw black plastic joiner	CCG0240
15	Classic claw bracket gasket milk piece	CCG0252
16	Classic claw bracket gasket air piece	CCG0250