



iNTELSTART

The iNTELSTART is designed to work in conjunction with either iNTELFLOW, iNTELCENTER or iNTELPUMP controllers which when networked to the iNTELSTART via RS485 can be programmed to switch the plate heat exchanger (PHE) pump or solenoid valve on & off at the same time as the milk pump during milking thereby reducing water usage. The iNTELSTART will also turn the water off automatically during the wash cycle, eliminating the risk of accidental cooling of hot wash water.

The iNTELSTART can be customised to individual installations by adjusting the internal timers.

The iNTELSTART also controls the Vacuum Pump Motor Contactors and if using a Water Ring type vacuum pump a float switch can be installed in the water reservoir and if there is no water present, the pump will not run, thus preventing overheating.



KEY FEATURES

- Programmable timers, can be customised
- Controls the water flow through the PHE
- No vacuum pump fluid protection
- "Remote Pump Out" switch capable

SYSTEM FEATURES

RUN ON TIME 1–20 seconds

PUMP OUT TIME 1–30 seconds

AUTO MILK START Yes / No

PUMP MANAGER ADV / STD

MILK / WASH DELAY 1–60 seconds

MILK CLEAR TIME 1–60 seconds

INJECTOR ON TIME 1–120 seconds

ACTUATOR CYCLE TIME 1–120 seconds

ACTUATOR ON TIME 1–30 seconds

PUMP OFF DELAY 1–120 seconds

PHE START DELAY 0–30 seconds

PHE RUN ON TIME 1–120 seconds

FLUID LEVEL SWITCH N/O, N/C

FLUID LEVEL SHUT DOWN 1–30 seconds

NETWORK – Yes, automatic initiation of milk, wash and off modes



OPERATOR INFORMATION AT MILKING TIME

On screen optional display

- Modes – milk, wash and off
- Pump running or stopped
- PHE running or stopped
- Milk to wash transition
- Pumping out
- Milk to purge



OPERATOR FUNCTIONALITY

Operator adjustable from front cover

- Keys include Milk, Wash, Purge and Off





SPECIFICATIONS

iNTELSTART

OPERATING VOLTAGE	12-15V DC
CONTROLLER OUTPUT	Milk pump contactor 250V, 3 amps max
PURGE VALVE OUTPUT	12V DC
OVERLOAD PROTECTION	Yes - Sub miniature fuses
INPUT PROTECTION	Polarity protected
ENCLOSURE	165mmH x 220mmW x 110mmD
IP PROTECTION	IP55

POWER SUPPLY

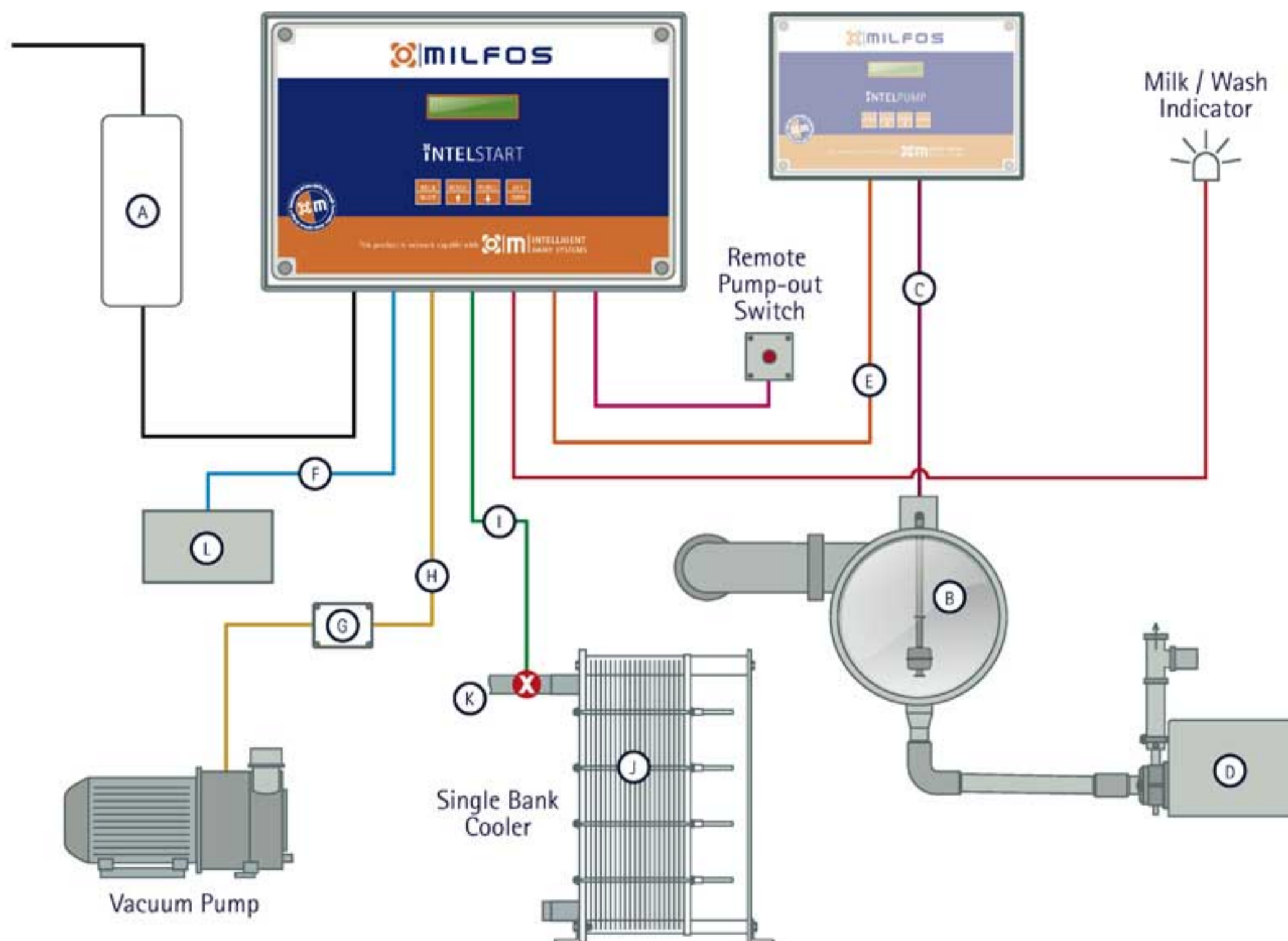
INPUT VOLTAGE	240V AC 50/60HZ
OUTPUT	12V DC Output 1 amp
ENCLOSURE	88mmH x 68mmW x 59mmD

FLOAT LEVEL SWITCH

OPERATING VOLTAGE	12V DC
OPERATING TEMPERATURE	0 - 75°C
FLYING LEAD	0.5m
IP RATING	To IP68
MATERIALS	Nylon



iNTELSTART



(A) Power supply 12V DC

(B) Receiving can

(C) Milk float

(D) Milk pump

(E) RS485 communication

(F) Fluid float 12V (optional)

(G) Motor starter and overloads

(H) Vacuum pump control 240V

(I) Dorot valve control

(J) Milk cooler

(K) Water inlet

(L) Water reservoir (if required)