



iHDR100

HEAVY DUTY RAM

Milking a large number of cows quickly and efficiently requires specialist tools at milking time. The iHDR100 Ram has been engineered as a heavy-duty solution to meet the needs of today's demanding milking environment.

A powerful 100mm bore provides retraction power for any cluster removal system. This power is also essential when used with cluster drop systems.

The retraction speed is governed by an adjustable regulator which ensures the cluster is removed smoothly with minimal 'cluster swing'.

The vacuum cylinder is made from high tech plastic mouldings impregnated with a Teflon coating for long operating life.

The ram features multiple pulleys so you can select a stroke ratio from 1:1, 1.5:1 and 2:1.

The cord is made from a special braid developed specifically for the application with maximum flexibility and durability with minimal absorption of water and effluent at milking time.

The operators job is made easy thanks to the quick vent system integrated in the head of the ram. This saves up to 60% effort pulling the cord out of the ram.

Other innovative design features that can be integrated into the automation package include onboard ACR controller, control solenoids and pull down initiation probes within the ram and more.

KEY FEATURES

- Powerful 100mm cylinder
- Retraction speed control for gentle cluster removal and minimal cluster swing
- Multiple rope configurations / ratios (1:1, 1.5:1, 2:1)
- In-built probes for "Pull Start" initiation
- Quick venting system makes pulling cord from ram effortless
- Quick installation and servicing





KEY TECHNOLOGIES INCORPORATING THE iHDR100 RAM

See individual product pages for more details

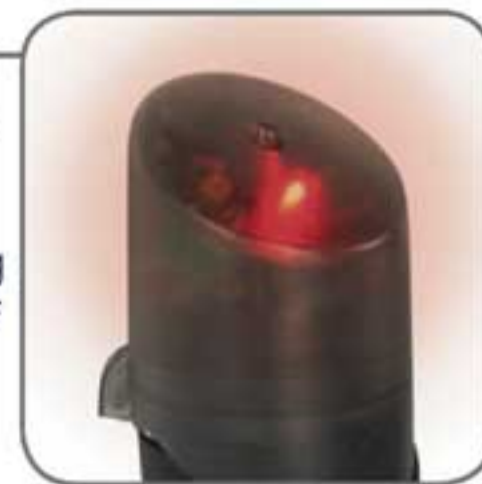
BAIL RESTRAINT SYSTEM

- Retains cow on the platform if she is still milking, has kicked the cluster off or has low milk alerts
- Easily fitted to new or old rotary platforms
- Integrates with Milfos ACR automation range or existing cluster removers



iCR – INTELLIGENT CLUSTER REMOVER (see [7.3.6](#))

- Integral part of system housing electronic controller in head of iHDR100 ram
- Utilises 'pull down' initiation
- Operator LED's located under transparent ram cover



iNTELSKAN RANGE

(see [7.3.10](#))

- Used in the iNTELSKAN EL and iNTELSKAN PLUS range of automation products
- Cluster drop down system and quick venting makes essential features of both products possible
- Control solenoids used in the head of the ram

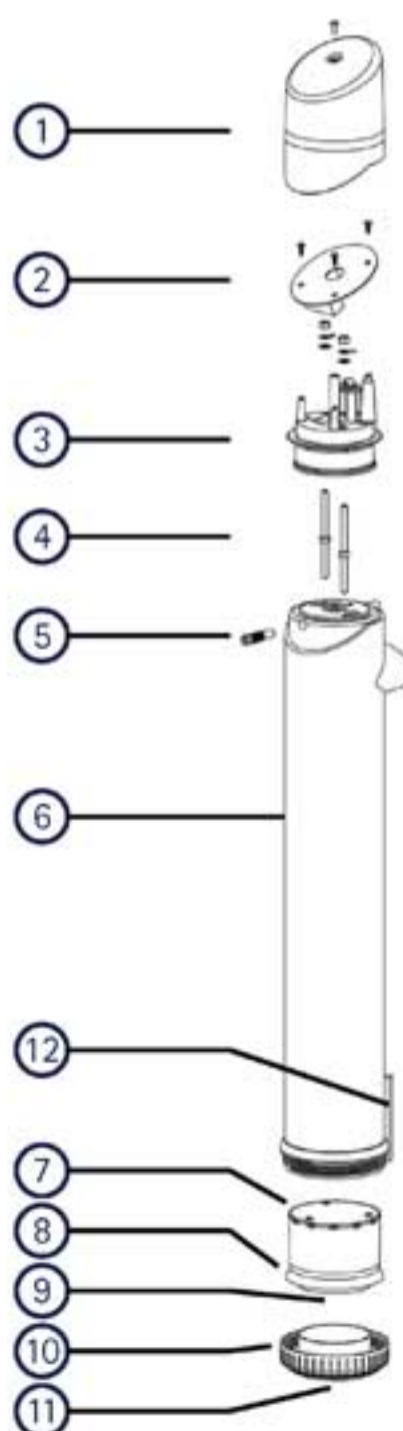


iNTELARM (see [7.4.19](#))

- iNTELARM system installed on the iXPRESSIA system utilises the iHDR100 ram
- Ram is mounted directly to iNTELARM for compact installation
- Warning LED located in head of ram perfectly positioned for operators in the pit area allowing complete visibility



EXPLODED VIEW OF iHDR100 RAM



SPECIFICATIONS

STROKE	1:1 = 1000mm 1.5:1 = 1500mm 2:1 = 2000mm
WORKING VACUUM	38-50kpa
MOUNTING	4 x 8mm metric thread
VACUUM INLET	10mm
DIMENSIONS	740mmL x 110mmW x 120mmH
WEIGHT	1.4kg

COMPLETE RAMS

DESCRIPTION	CODE
iHDR100 BASIC	ACM1000
iHDR100 QUICK VENT	ACM1005
iHDR100 12V	ACM1020
iHDR100 24V	ACM1010
iHDR100 SMART RAM WITH RELAY	ACM1015

RAM PARTS

REF	DESCRIPTION
1	iHDR100 RAM OVERCAP
2	iHDR100 CONNECTION PCB
3	iHDR100 CONTROL SERVICE KIT
4	iHDR100 PULL START PROBES
5	iHDR100 RETRACTION ADJ. SCREW
6	iHDR100 RAM BODY
7	iHDR100 PISTON BODY
8	iHDR100 PISTON SEAL
9	iHDR100 PULLEY
10	iHDR100 END CAP ONLY
11	RAM CORD (PER METRE)
12	FOOT PLATE MOUNT